

Request for daily care

Inkjet plotter is the precision machine that has highly delicate mechanism. Especially, little dust and paper powder may have effect on a head nozzle firing ink, and may not get normal printing. To use the inkjet plotter in good condition, we recommend the following daily care.



CAUTION



1) JV3 is the plotter using the organic solvent ink. When implementing the daily care, **must wear supplied goggles and gloves.**



2) In case water or alcohol mixed into the organic solvent ink, flocculation would be occurred. Be sure that **not adhere water or alcohol to not only the nozzle and also near the head, the cap, wiper and so on.**



3) When not using (printing) this plotter for a long time, need to fire (flashing) little ink periodically to ensure the stability of ink firing.

When not using for a long time, turn off the front power supply, and the back one on (The “on” mark described as a vertical line “I” on the switch) and also keep the socket inserted.



- Do not disassemble this plotter. It causes an electric shock, fire, and damages.



- Be sure that not water into the inside of this plotter. If the inside gets wet, it causes an electric shock, fire, and damages.



- When implementing the daily care, turn off the power supply, and disconnect an electric cable. It causes unexpected accident.



- Do not use benzene, thinner, and the chemicals contained abrasives. The surface of the cover may be deteriorated or deformed.



- Do not apply a lube job on the inside of this plotter. The plotter mechanism may be damaged.

1. Installation environment

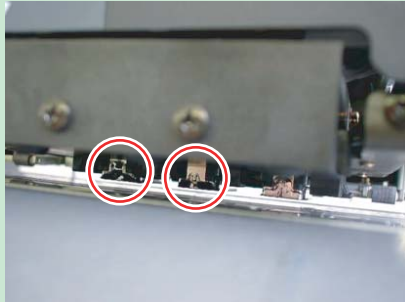
- Use this plotter in clean (less dust) environment. The use of fan and ventilator might be cause of dusty environment. They brow dust up dust around the plotter.
- As using organic solvent ink, install this plotter in a well-ventilated area.
- Working environmental temperature is +20 ~ +35 degrees. Avoid using at lower or higher than this.

2. Daily care

Around heads (☞ Operation manual P.3-6)

Dust easily accumulates most around heads, and it effects the action and the result of printing for this plotter, and also as this plotter has very delicate mechanism, need enough attention to the care for it. When gelling ink and dust adhere to the bottom of a slider and around heads, scour off it using a cotton bud. Do not touch the head nozzle part at this time.

Around heads contaminated



Clean with a cotton bud



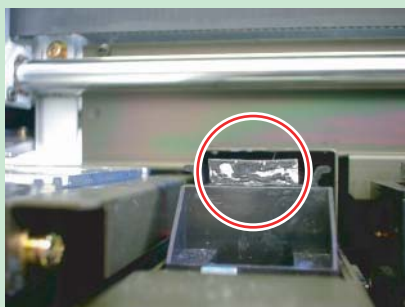
Capping station (☞ Operation manual P.3-4)

Dust easily accumulates around the cap. Clean not to adhere dust to the heads.

Wiper (☞ Operation manual P.3-4)

Ink and paper powder accumulate on the wiper. Confirm its condition, and clean it if it's dirty, and also in case it deformed, replace the new one along instruction manual 5-5.

Dirty wiper



The example of deformed wiper



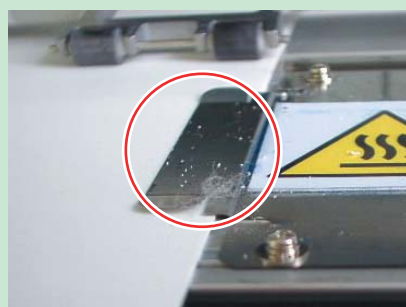
Metal paper guide

Cut media waste and dust adhered between metal paper guide and platen cause that media not feed normally and adhere them to the nozzle. Printing may not be implemented normally.

Metal paper guide



Metal paper guide with dust



Media sensor (👉 Operation manual P.3-3)

In case dust and ink adhered to the media sensor, media senses in error. Wipe out dust and ink with a soft cloth.



Platen (👉 Operation manual P.3-3)

Dust and paper powder easily adhered to the platen. Clean it frequently.

Wipe a platen and its cover with a soft brush or a dried cloth. When cleaning a platen, clean well the groove for a media paper guide and the one for media cut (cutter line) etc where easily accumulate the dust.

Exterior (👉 Operation manual P.3-3)

According to the working environment, the dust and cloud of dust may be adhered. Wring a soft cloth firmly after wetting it with water and wipe out the dust to prevent the head moving part from dust.

Waste ink tank (👉 Operation manual P.3-8)

Confirm if a waste ink tank is not full, and be sure not overflow.

At the end of pump tube located inside of waste ink tank will make ink clogge easy without daily care. Wipe out ink carefully at there using soft cloth.

3. Storage of media

Media should be stored in the little dust area, and not in direct sunlight. Avoid storing the media in the area with high temperature and high humidity.

4. Storage of ink cartridge

Store the ink cartridge in no direct sunlight, and no high humidity.

As it's a delicate product, do not drop it.

The board on an ink cartridge (right picture) should not be contaminated and not discharge static electricity.



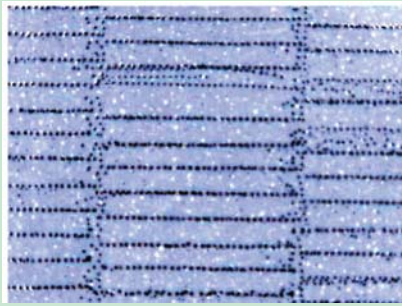
5. The examples of defective printing

These following examples indicate improper head (nozzle) firing by dust, which effect printing.

Confirm the nozzle condition periodically before or during outputting not to use in such as this condition.

The nozzle condition can be confirmed with [test print] in this plotter.

Deflection



Nozzle out



Ink dropping



Satellite



6. How to recover improper nozzle firing

When not using this plotter for a long time or according to environmental temperature, nozzle may be unstable in firing.

In the case of this, follow below procedures to recover nozzle.

In case the nozzle doesn't recover after implementing these procedures, contact with our customer service or agency you purchased, and need to replace heads and so on.

1) Daily care

Implement all parts noted on this article.

2) Normal cleaning (☞ Operation manual P.2-20)

Implement normal cleaning along the instruction manual after daily care above-mentioned. Repeat cleaning and test printing, and confirm the nozzle still clogging or not.

3) Hard cleaning (☞ Operation manual P.2-20)

If nozzle clogging cannot be resolved even after normal cleaning few times, change normal cleaning to hard one, and implement the same procedures.

4) Nozzle cleaning (☞ Operation manual P.3-7)

In case nozzle clogging or other problems can not be cleared away after all these procedures, please implement nozzle cleaning.

Implement cleaning and test printing after nozzle cleaning for a minute.

5) Nozzle cleaning (☞ Operation manual P.3-7)

In case nozzle clogging is not solved with nozzle cleaning above-mentioned, set up cleaning time 5 minutes, and implement cleaning and test printing after nozzle cleaning again.

In case nozzle clogging is not resolved with all these procedures, contact with our customer service or make service call to the agency you purchased.